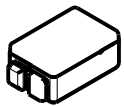
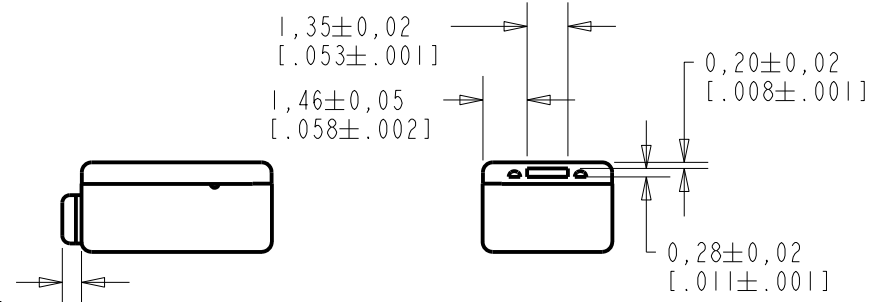
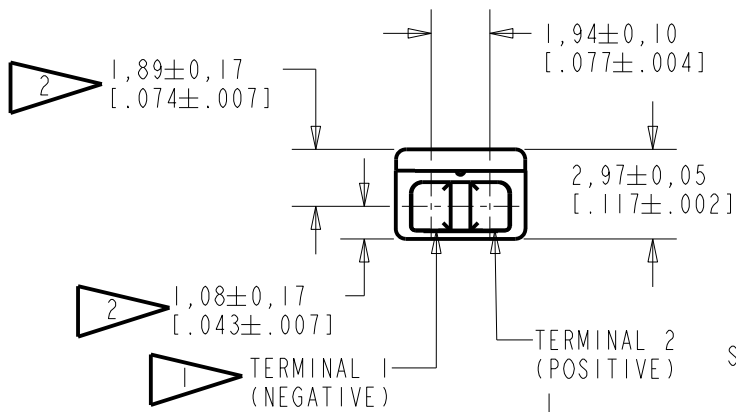
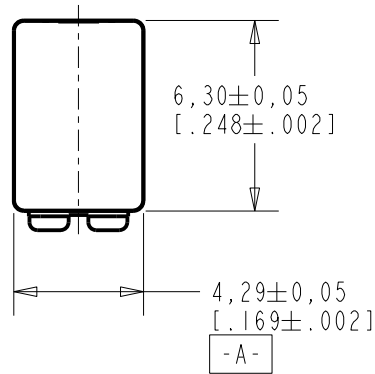


ED-30761-000
SHT 1.1

NOTE:

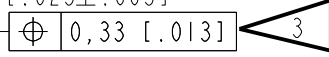
- 1 A POSITIVE GOING VOLTAGE AT TERMINAL 2, RELATIVE TO TERMINAL 1, CAUSES A DECREASE IN PRESSURE AT THE SOUND OUTLET.
- 2 LOCATED FROM TWO SURFACES FOR CUSTOMER CONVENIENCE. ONLY APPLICABLE FROM ONE SURFACE, NOT TO BE USED TOGETHER. HORIZONTAL LOCATION FOR TERMINAL CENTERED TO $\pm 0,17$ [.007].
- 3 IT IS IMPORTANT TO KEEP HOLE CLEAN AND CLEAR AT ALL TIMES. CLOGGING THE HOLE WILL CAUSE PERFORMANCE CHANGES.



SCALE 2:1

NOMINAL WEIGHT
.31 GRAM

DIMENSIONS IN MILLIMETERS [INCHES]



| Revision | C.O. # | Implementation Date | RELEASE LEVEL | REVISION |
|----------|-----------|---------------------|---------------|----------|
| A | C10111210 | 6-10-10 | Active | A |
| | | | | |

| | | | |
|----------------------|--|--------------|---------------|
| SCALE: 4:1 | | DR. BY: LSY | DATE: 6-10-10 |
| DO NOT SCALE DRAWING | | | |
| TITLE: RECEIVER | | ED-30761-000 | |
| OUTLINE DRAWING | | SHT 1.1 | |
| | | CK. BY: GJP | DATE: 6-17-10 |
| | | APP. BY: GJP | DATE: 6-17-10 |

KNOWLES ELECTRONICS
ITASCA, ILLINOIS U.S.A.

DESCRIPTION

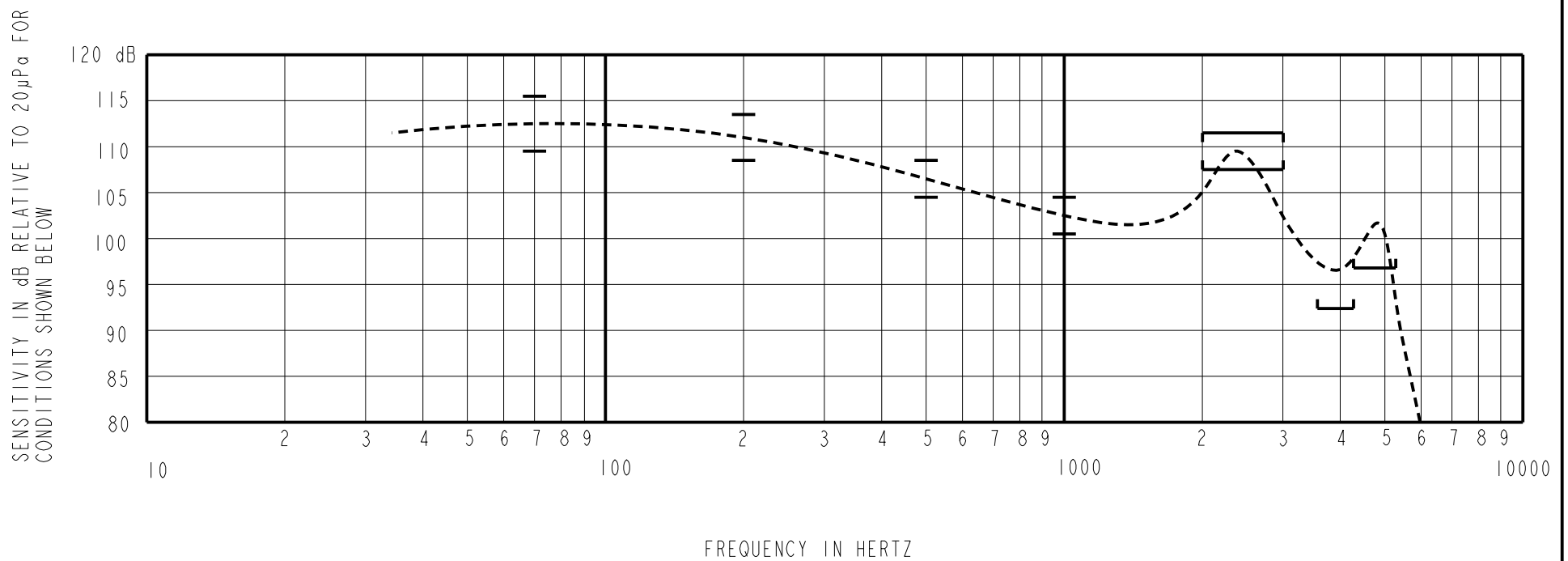
A BALANCED ARMATURE ED RECEIVER WITH VENT OPENING ON THE BOTTOM OF THE CUP.

NO DAMPING

ED-30761-000

SHEET 2.1

CONSTANT VOLTAGE DRIVE CONDITIONS



ACOUSTICAL

SENSITIVITY

DEVICE WILL PRODUCE THE SPL LISTED BELOW UNDER TEST CONDITIONS DESCRIBED IN TABLE 3. NOMINAL SENSITIVITY AT 1kHz IS dB RELATIVE TO 20 μ P_a. ALL OTHER VALUES IN dB RELATIVE TO THE SENSITIVITY AT 1kHz. TEST DATA MEASURED WITH VENT OPEN.

| FREQUENCY (Hz) | MINIMUM | NOMINAL | MAXIMUM |
|----------------|---------|---------|---------|
| 70 | +7.0 | +10.0 | +13.0 |
| 200 | +6.0 | +8.5 | +11.0 |
| 500 | +2.0 | +4.0 | +6.0 |
| 1000 | -2.0 | 102.5 | +2.0 |
| 2000-3000 | +5.0 | +7.0 | +9.0 |
| 3600-4300 | -9.0 | --- | --- |
| 4300-5300 | -4.5 | --- | --- |

PORT LOCATION: 12N

TABLE 1

TOTAL HARMONIC DISTORTION

DEVICE WILL NOT EXCEED TOTAL HARMONIC DISTORTION LEVELS LISTED BELOW.

| FREQUENCY (Hz) | AC DRIVE (V rms) | DC BIAS (mA) | LIMIT (%) |
|----------------|------------------|--------------|-----------|
| 500 | 0.413 | 0 | 8 |
| 817 | 0.146 | 0 | 5 |
| 1225 | 0.146 | 0 | 5 |

TABLE 2

TEST CONDITIONS

| | |
|------------------------|--|
| NOMINAL SOURCE VOLTAGE | 0.146 V rms, 0mA DC BIAS |
| SOURCE IMPEDANCE | <1 Ohm |
| TUBING | 10mm [.394"] LONG, 1mm [.039"] I.D. |
| COUPLER CAVITY | 2 CC SIMULATED ANSI S3.7 TYPE HA-3 (IEC 60318-5) |

TABLE 3

ELECTRICAL

| | |
|--------------------|---------------------|
| DC RESISTANCE | 25.4 OHMS \pm 10% |
| IMPEDANCE @ 500 Hz | 49.9 OHMS \pm 15% |
| IMPEDANCE @ 1 kHz | 84.1 OHMS \pm 15% |

TABLE 4

ISOLATION: CASE WILL BE ELECTRICALLY ISOLATED FROM THE COIL CIRCUIT.

| Revision | C.O. # | Implementation Date | RELEASE LEVEL | REVISION |
|--|-----------|---------------------|---------------|----------|
| | | | Active | A |
| A | C10111210 | 6-10-10 | | |
| WHEN TEST LIMITS ARE USED TO ESTABLISH INCOMING INSPECTION ACCEPTANCE/REJECTION CRITERIA, CORRELATION OF TEST EQUIPMENT WITH KNOWLES IS ALSO REQUIRED FOR ELIMINATION OF EQUIPMENT AND TEST METHOD VARIATION | | | DR. BY | DATE |
| TITLE: RECEIVER | | | LSY | 6-10-10 |
| | | | ED-30761-000 | |
| PERFORMANCE SPECIFICATION | | | GJP | 6-17-10 |
| | | | APP. BY | DATE |
| | | | GJP | 6-17-10 |

KNOWLES ELECTRONICS
ITASCA, ILLINOIS U.S.A.